



**WORLD'S BEST  
ALLOY BULLBARS**

**East Coast Bullbars (ECB Pty Ltd)**

Tel: 07 3897 5700

Fax: 07 3283 1168

ecb@ecb.com.au www.ecb.com.au

29 Snook St  
Clontarf QLD 4019  
Australia

Po Box 122  
Margate QLD 4019  
Australia

**8S100SY**

REPLACES: 00.00.00

REVISED: 30.11.15

## **FITTING INSTRUCTIONS**

### **Subaru Outback 1/15 on TYPE 8 LOOP BAR VEHICLE FRONTAL PROTECTION SYSTEM (VFPS) FOR AIR BAG & ADR COMPLIANT VEHICLES**

Check installation hardware before commencing.

1. Lift bonnet.
2. If vehicle is fitted with headlight washers, gently pull away from the bumper and lift top tab to remove. **See figure 1.**
3. At point where guard meets plastic bumper, remove one plastic push pull clip. **See figure 2.**
4. From under vehicle around edge of bumper, remove nine plastic push pull clips. Pull lower inner guard away from bumper and unclip fog lights. **See figure 3.**
5. Under bonnet between headlights, remove six plastic push pull clips from rear of plastic bumper at bonnet seal, to radiator support. **See figure 4.**
6. Gently pull bumper out from sides of vehicle to unclip from guard and forward to unclip from under headlight. Pull lower section of bumper forward and release top of bumper from clips on radiator support by pulling up. Remove bumper. **See figure 5.**
7. Install convoluted tubing (supplied) over washer tube under bumper support. This will protect the washer tube from rubbing on the ECB steel mount.
8. Install ECB steel mounts supplied using two M8 x 100mm bolts, flat washers and nyloc nuts (supplied) each side. NOTE: Slide the mount up from below the chassis rail and fit rear bolt first. **See figure 6.**
9. Remove polystyrene infill to allow access to the bumper support
10. Fit ECB support brackets (supplied) to the front of the bumper support and onto the ECB Steel mounts. Using one M10 x 25mm and one M10 x 40mm bolt, spring washer, flat washer and nut plate supplied. **See figure 7.**
11. Push infill onto ECB steel support brackets. Refit polystyrene infill using 300mm zip ties (supplied), securing around the centre of the infill.
12. Using internal measurement of alloy mounts, set external steel mount measurement. Ensure mount is central to body. Adjust if necessary. Ensure the steel mounts are level before tightening bolts. Tighten all bolts.
13. Using the measurement of alloy mounts as a guide, trim the lower grille so the steel mounts fit through. **NOTE:** Use inside of alloy mount as the outside of bumper hole measurement.
14. Refit the bumper in the reverse steps of 2 to 6.



**WORLD'S BEST  
ALLOY BULLBARS**

**East Coast Bullbars (ECB Pty Ltd)**

Tel: 07 3897 5700

Fax: 07 3283 1168

ecb@ecb.com.au www.ecb.com.au

29 Snook St  
Clontarf QLD 4019  
Australia

Po Box 122  
Margate QLD 4019  
Australia

15. Fit the ECB Protection Bar to the ECB steel mounts using the M10 x 40mm bolts, flat washers, spring washer and nuts (supplied). Align protection bar. **See Figures 8 and 9. Tighten all bolts.**

**ENSURE NUMBER PLATE IS CLEARLY VISABLE**

**Note:** When fitting/refitting the licence plate to the vehicle, ensure there is no obstruction to licence plate vision in accordance with local authorities. If required relocate licence plate to an alternate location.

**Further VFPS Notes:**

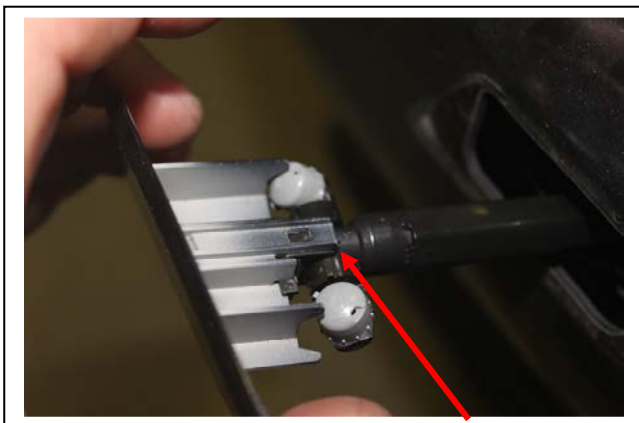
- a) Do not attach VFPS to the vehicle using anchorages not intended for this purpose (e.g. engine mounting bolts).
- b) Do not use this product for any vehicle make or model, other than those specified by the VFPS manufacturer.
- c) Do not remove the plaque or label from the VFPS.
- d) Do not modify the structure of the VFPS in any way.
- e) No accessory or fitment should project forward of the VFPS forward profile.
- f) **ENSURE THESE INSTRUCTIONS ARE LEFT WITH VEHICLE OWNER AND/OR OPERATOR.**

**IMPORTANT INFORMATION**

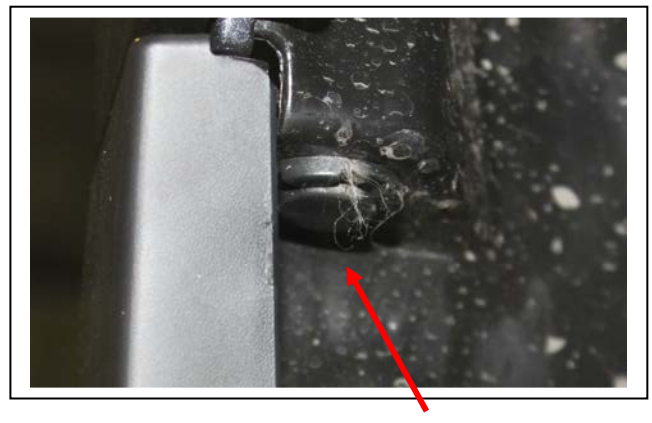
Periodically check bolts and nuts for correct tightness, especially if travelling on rough roads

**FITTING KIT**

1 – Set ECB Steel mounting brackets	6 – M10 x 1.25 nuts
1 – Pair Type 8 Support brackets	4 – M8 x 100mm bolts
1 – Pair M10 x 1.25 Nut plates on 300mm wire	8 – 5/16 x 1 ¼ washer
6 – M10 x 1.25 x 40mm bolts	4 – M8 nyloc nuts
2 – M10 x 1.25 x 25mm bolts	2 – 250mm length 13.5mm convoluted split loom
14 – M10 flat washers	2 – 300mm zip ties
8 – M10 spring washers	



**Figure 1:** Showing Washer retention clip



**Figure 2:** Bumper to guard clip, front of wheel arch



© Copyright – ECB Pty Ltd – 2014

**Figure 3:** Placement of clips under bumper



**WORLD'S BEST  
ALLOY BULLBARS**

**East Coast Bullbars (ECB Pty Ltd)**

Tel: 07 3897 5700

Fax: 07 3283 1168

ecb@ecb.com.au www.ecb.com.au

29 Snook St  
Clontarf QLD 4019  
Australia

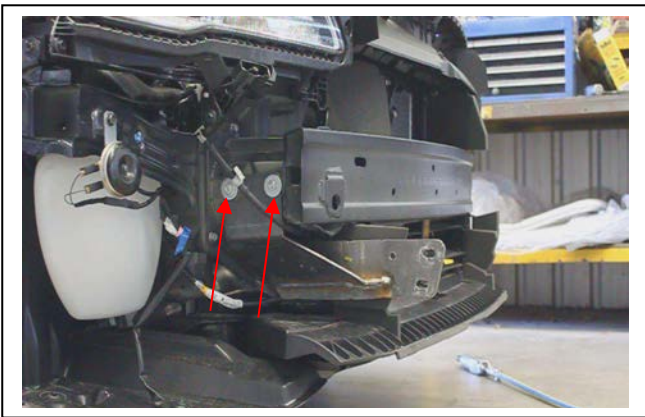
Po Box 122  
Margate QLD 4019  
Australia



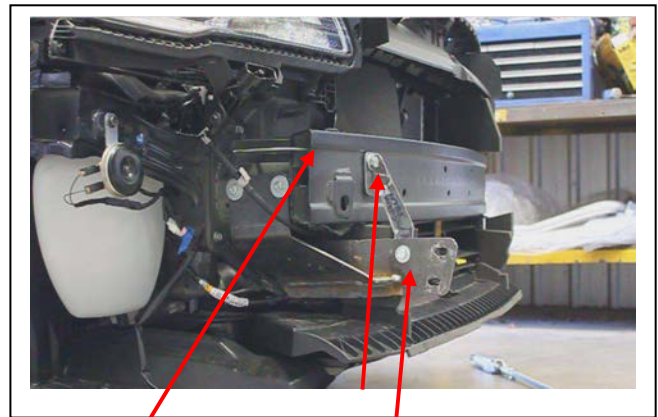
**Figure 4**



**Figure 5**



**Figure 6**



**Figure 7**

Nut plate on 300mm wire



**Figure 8**



**Figure 9**



**WORLD'S BEST  
ALLOY BULLBARS**

**East Coast Bullbars (ECB Pty Ltd)**

Tel: 07 3897 5700

Fax: 07 3283 1168

ecb@ecb.com.au www.ecb.com.au

29 Snook St  
Clontarf QLD 4019  
Australia

Po Box 122  
Margate QLD 4019  
Australia

**We value your comments**

Dear Fitter,

ECB would like to know how you went with the installation of this product. We value your comment and may need to contact you to clarify some details so please complete your contact details clearly.

We would appreciate if you could complete as many of the following details as possible.

<b>Your Name:</b>	<b>Your contact No.</b>
<b>Product Part No.</b>	<b>Product Invoice No.</b>
<b>Product Description:</b>	<b>Make, model, and year of vehicle:</b>
<b>Product Work Order No.</b>	<b>Company your from/Company product purchased from:</b>

**Date of Fitment:** \_\_\_\_/\_\_\_\_/\_\_\_\_

Was the fitting hardware supplied complete?

Yes

No

If no what was not supplied

---

---

Did the installation go well?

Yes

No

Please provide comments

---

---

---

Please draw diagrams if you need to.

**Post to**  
Reply Paid 122  
PO Box 122  
Margate QLD 4019

**Fax to**  
(07) 3283 1168



WORLD'S BEST  
ALLOY BULLBARS

East Coast Bullbars (ECB Pty Ltd)

Tel: 07 3897 5700

Fax: 07 3283 1168

ecb@ecb.com.au www.ecb.com.au

29 Snook St  
Clontarf QLD 4019  
Australia

Po Box 122  
Margate QLD 4019  
Australia

## DESPATCH CHECKLIST 8S100SY

Work Order #		<b>See other side of this page for photos of all mounts</b>
Finish:		
Transport:		
Due Date:		

- OC..... 1 – Pair Steel mounting brackets.
- OC..... 1 – Pair Steel Support bracket
- OC..... 1 – Pair Nut Plate on wire
- BK..... 1 – Bolt Kit.

\_\_\_\_\_/\_\_\_\_\_  
Wrapper's initials / Checker initials



**Is this product “the best it can be” Yes**  
If **NO** fix before continuing

All parts checked and completed by:

Nut and bolts: \_\_\_\_\_ Date \_\_/\_\_/\_\_

Order control: \_\_\_\_\_ Date \_\_/\_\_/\_\_

Final wrap check: \_\_\_\_\_ Date \_\_/\_\_/\_\_



**WORLD'S BEST  
ALLOY BULLBARS**

**East Coast Bullbars (ECB Pty Ltd)**

Tel: 07 3897 5700

Fax: 07 3283 1168

ecb@ecb.com.au www.ecb.com.au

29 Snook St  
Clontarf QLD 4019  
Australia

Po Box 122  
Margate QLD 4019  
Australia



Support plates and nut plates  
must be opposite

\_\_\_\_\_/\_\_\_\_\_  
Wrapper's initials / Checker initials